

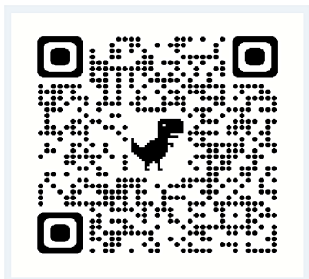



# CR4LL: Cardiac Rehabilitation for All

Beleigoli, A., Hutchinson, C., Pinero de Plaza, A., Clark, R.,  
Tirimacco, R., Hendriks, J., Versace, V., Tideman, P. A., Lynch, I. & Keech, W.

Presenter: Dr Maria Alejandra Pinero de Plaza, PhD

---



CR4LL is supported by the  (1.5-year project – AUD 25K).

# CR4LL - A telehealth CR care pathway tailored to the needs and preferences of disadvantaged populations living with CV in rural and remote Australia



CR telehealth services need to be re-designed to meet the needs of patients at high risk of non-attendance.

To develop and implement a new care pathway within the Integrated Cardiovascular Clinical Network SA (iCCnet SA) telehealth service to increase attendance and completion of Cardiac Rehabilitation among patients with a low Socioeconomic Status living in regional, rural and remote areas of Australia.



**\*Only 30-46% of eligible patients are referred to CR and only 28% attend a CR program**

# H: Co-designing a care pathway within an existing telehealth service with patients with low SES living in country areas will:



Improve patient-centredness



Tailor the service to their needs and preferences



Increase CR uptake

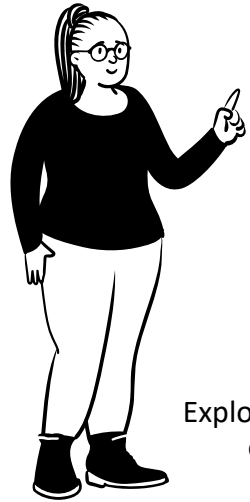


Improve CR clinical outcomes: patient-reported outcomes and experience measures





Understand the Patients' journeys from hospital discharge to CR



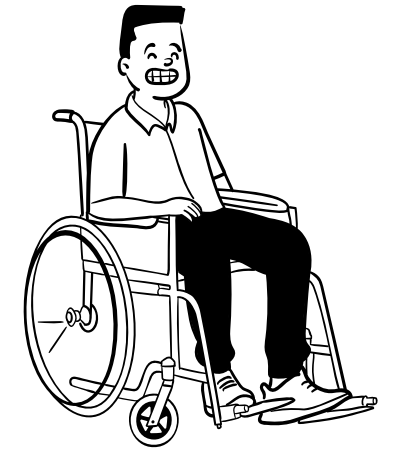
Explore Patients' CR outcomes



Explore how CR services can be changed



Heart Health for Life



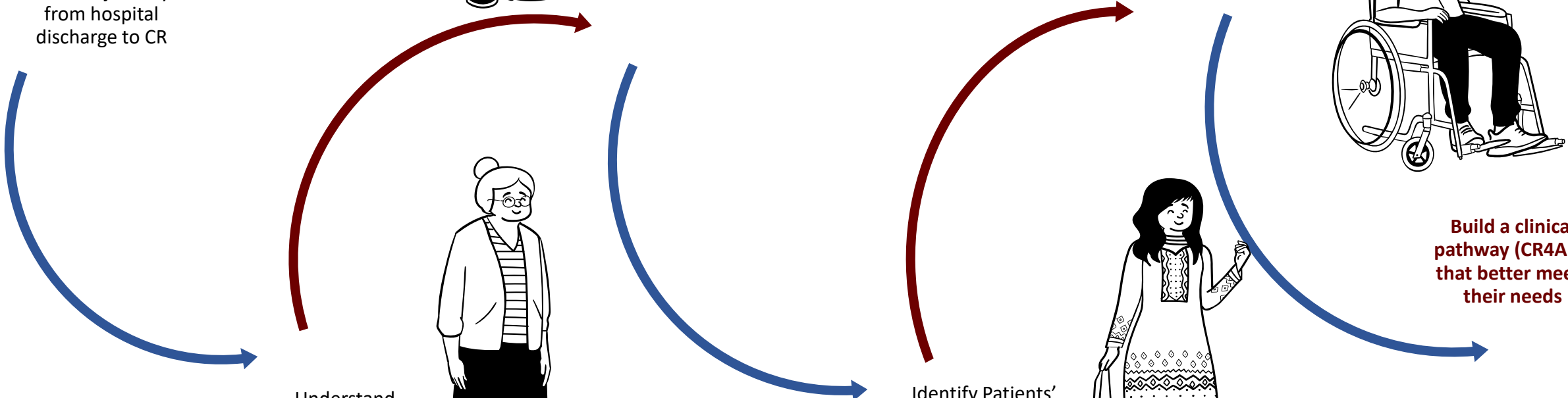
**Build a clinical pathway (CR4ALL) that better meets their needs**



Understand Patients' satisfaction with their journeys



Identify Patients' inputs/contribution, including financial ones

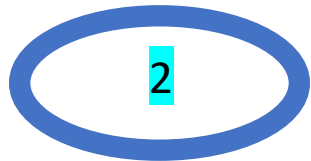


# Cardiac Rehabilitation for All

Mixed-method



## Frameworks



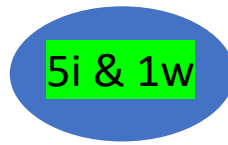
Experience-Based Co-Design  
Social Return on Investment

## Patients

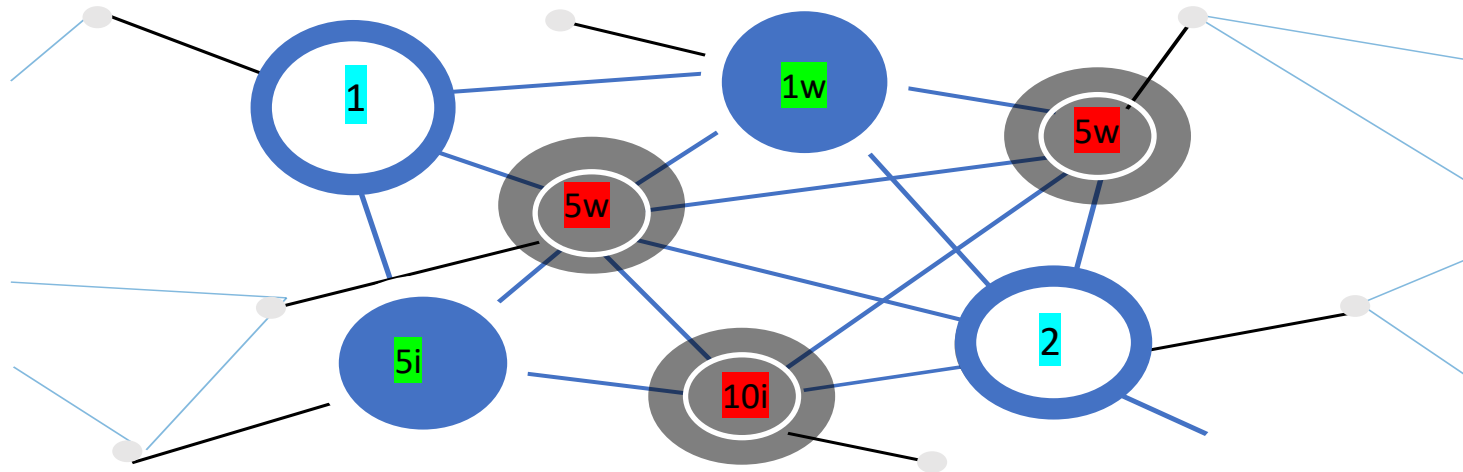


10 patients for interviews  
36-48 patients for workshops

## Professionals



6-12 professionals



## Ethics approved study sites

The six Local Health Networks (LHNs)  
in regional, rural and remote SA:

1. Barossa Hills Fleurieu LHN,
2. Flinders and Upper North LHN,
3. Yorke LHN,
4. Limestone Coast LHN,
5. Eyre and Far North LHN,
6. Riverland Mallee Coorong

\*Eligible patients will be identified through the South Australian CR database managed by iCCnet (CATCH database) and with the quantitative data end-users profiles and preferences will be described

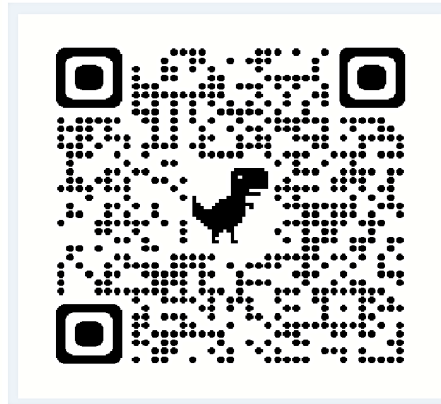
# Thank You

Maria Alejandra PINERO DE PLAZA, Lic. Social and Mass Comms., PhD<sup>a, b, c</sup>

<sup>a</sup> National Health and Medical Research Council, Transdisciplinary Centre of Research Excellence in Frailty and Healthy Ageing, Adelaide, South Australia.

<sup>b</sup> Caring Futures Institute (CFI), College of Nursing and Health Sciences, Flinders University, Bedford Park SA 5042.

<sup>c</sup> The Mparntwe Centre for Evidence in Health, Flinders University: A JBI Centre of Excellence.



[alejandra.pinerodeplaza@flinders.edu.au](mailto:alejandra.pinerodeplaza@flinders.edu.au)

CR4LL is supported by the



(1.5-year project – AUD 25K).