

[WHAT'S ON](#)[VISIT](#)[LEARN](#)[DISCOVER](#)[GET INVOLVED](#)[ABOUT](#)[CONTACT](#)

SOUTH AUSTRALIAN MARITIME MUSEUM



JANE AUSTEN'S SONGS OF THE SEA

Sold Out

This year commemorates the 200 year anniversary of Jane Austen's death. The Maritime Museum invites you to join us in celebrating the life, characters and stories of Austen for an evening produced and performed by:

Gillian Dooley (soprano)

Raechel Damarell (alto)

Richard Schaumlöffel (violin)

Christine Morphett (harp)

Kathy Walton (flute and whistles)

Among the music in Jane Austen's personal music collection are many songs about sailors and the sea. Britain was at war for most of Austen's lifetime and two of her brothers were

MAKE A BOOKING

EVENT

04 November 2017
5.30pm for a 6.00pm start

WHERE

126 Lipson Street, Port Adelaide, South Australia, Australia

[JANE AUSTEN](#)[MUSIC](#)[PERFORMANCE](#)

WHAT'S ON**VISIT****LEARN****DISCOVER****GET INVOLVED****ABOUT****CONTACT**

about the wives and families left behind, sailors' love songs, and songs about war and revolution. Many of the songs are drawn from South Australian Maritime Collections and written by composers including William Shield, Samuel Arnold, Stephen Storace and the prolific Charles Dibdin, whose comic and sentimental songs Austen seems to have been especially fond of. There are arrangements of Haydn and Handel tunes, and there is even a love song written by Matthew Flinders – the colleague of Jane Austen's younger brother.

The program includes 90 minutes of performance with a 20-minute interval, with a paid bar. \$30 per person or \$25 for concession. Bookings Essential.

DON'T MISS OUT!

MAKE A BOOKING

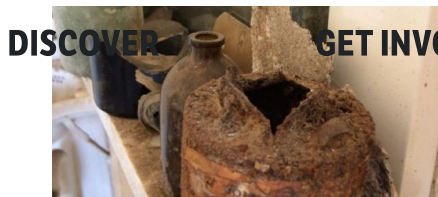
SIMILAR EVENTS

SHOW ALL

WHAT'S ON

VISIT

LEARN



SOUTH AUSTRALIAN MARITIME MUSEUM

“KIS A SAILOR” LIMITED EDITION GIN

01 MARCH - 31 DECEMBER 2019 [READ MORE](#)

TORRENS ISLAND QUARANTINE STATION TOURS 2019

18 FEBRUARY - 28 OCTOBER 2019 [READ MORE](#)

SCHOOL HOLIDAYS AT THE MUSEUM – PIRATES IN THEIR PJ'S

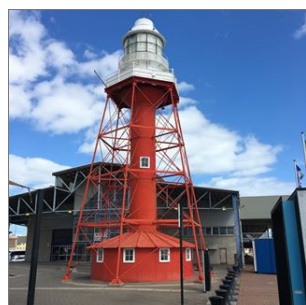
30 SEPTEMBER - 11 OCTOBER 2019 [READ MORE](#)

SOUTH AUSTRALIAN MARITIME MUSEUM

126 LIPSON STREET, PORT ADELAIDE, 5015

Daily 10am — 5pm (Closed Good Friday & Christmas Day)

WHAT'S HAPPENING AT @SA_MARITIME_MUSEUM



VISIT

[WHAT'S ON](#)

[VISIT](#)

[LEARN](#)

[Help us do more](#)

[DONATE](#)

[DISCOVER](#)

[GET INVOLVED](#)

[ABOUT](#)



[CONTACT](#)

SOUTH AUSTRALIAN MARITIME MUSEUM



THE HISTORY TRUST OF SOUTH AUSTRALIA IS AN AGENCY OF THE GOVERNMENT OF SOUTH AUSTRALIA

[DISCLAIMER](#) | [PRIVACY](#) | [ACCESSIBILITY](#)

