

Quantitative Assessment of Fundamentals of Care Framework: a pilot study

Prof. Regina Allande-Cussó

7th of June 2024

CO-AUTHORS:

Regina ALLANDE-CUSSÓ

Ana Maria PORCEL-GÁLVEZ

Maria Alejandra PINERO DE PLAZA

Tiffany CONROY

Alison KITSON

The meeting point between the humanization of healthcare and FoC Framework

SECTION 1

HUMANIZATION OF CARE: Concept

The Humanization of healthcare merges as **A NEW APPROACH**, and it is defined as:

An empathetic, holistic and respectful approach to patients

+

considering cultural, gender and ethical perspectives

+

sufficient human and material resources in healthcare institutions

=

establishing meaningful, mutually beneficial relationships with patients

and delivering humanized care

Humanization of care context

Plan de Humanización del Sistema Sanitario Público de Andalucía

Estrategia de humanización compartida



National strategy on the humanization of the National Health Service

[Ministry of Health of the Government of Spain (Official State Journal num 467, 18/12/2019)]

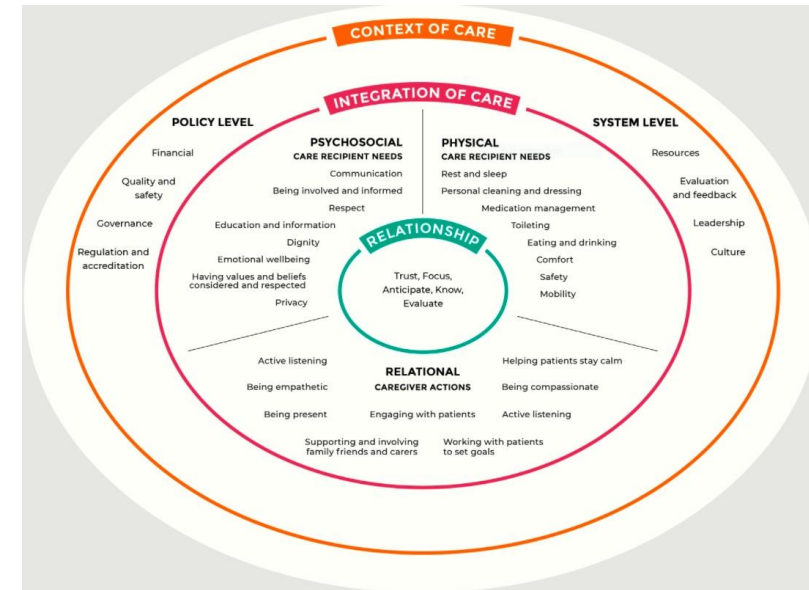
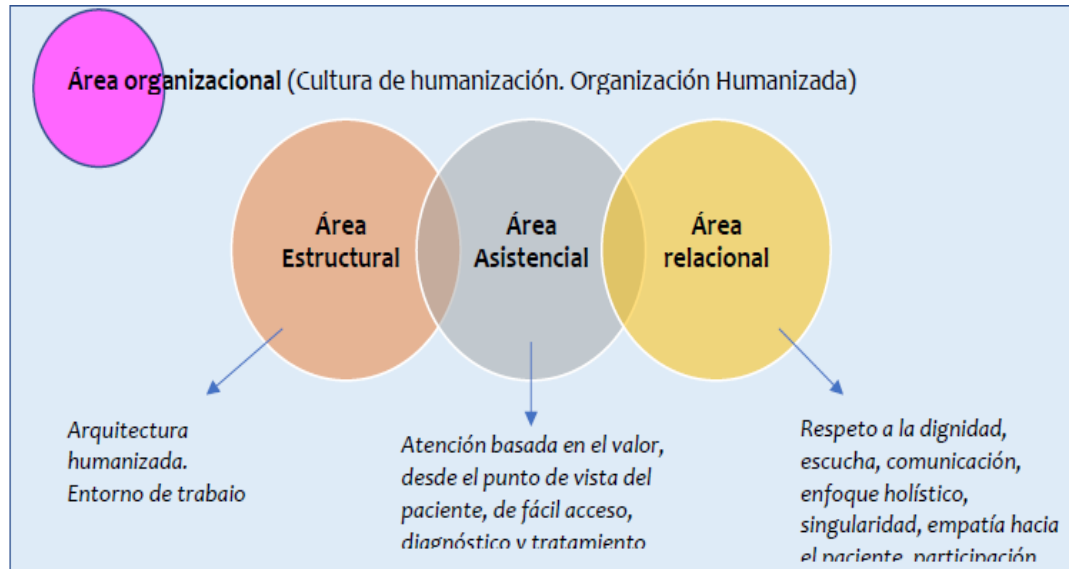
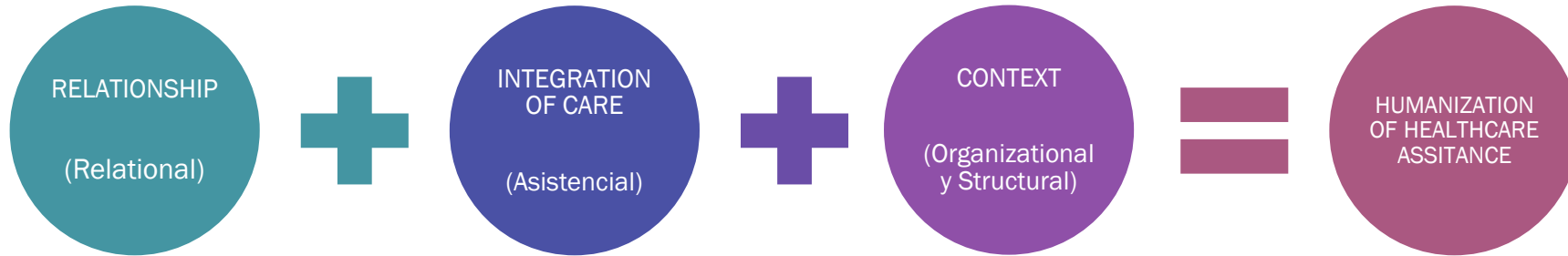


Logo Consejería de Salud y Consumo

HumanizAndalucía
Estrategia de Humanización
Compartida de Andalucía

Humanization Plan of the Andalusian Public Health System

Aligning Andalusian Plan to improve the humanization in healthcare assistance with FoC Framework



The FOC framework can be presented as PCFC = PP (R + i-FOC + C), where



Cofinanciado por
la Unión Europea



HUMANCARE Project

Granted by Spanish Health Department (100.000€)

Aim:

Evaluation of the HUMANisation of CARE considering the **three dimensions** described in the **Andalusian Government Plan to improve the humanization in healthcare assistance**: relational, organizational, and structural, and their impact on **health outcomes**

HUMANCARE Project:

Phase 1

Pilot study



SECTION 2

Development of FoC Framework Questionnaire

- FoC Items (Ad Hoc)-> [expert panel \(2022\)](#)

Rating Scale: Likert scale of 5 points

- **RELATIONSHIP** Dimension: 5 items
- INTEGRATION OF CARE Physical: 5 items
- INTEGRATION OF CARE Psychosocial: 10 items
- INTEGRATION OF CARE Relational: 9 items
- **CONTEXT**: 12 items

TOTAL ITEMS: 41

PILOT STUDY Methods (I)

- Cross-sectional descriptive and analytical study
- Hospital Virgen del Rocío (Sevilla)
- Aims:
 - ✓ To test the tool and the data collection protocol
 - ✓ Estimate the assessment time for each subject and the feasibility of the designed tool
 - ✓ To study the comprehensibility of the items measuring the **FoC Framework Questionnaire: to obtain preliminary results of its predictive model**

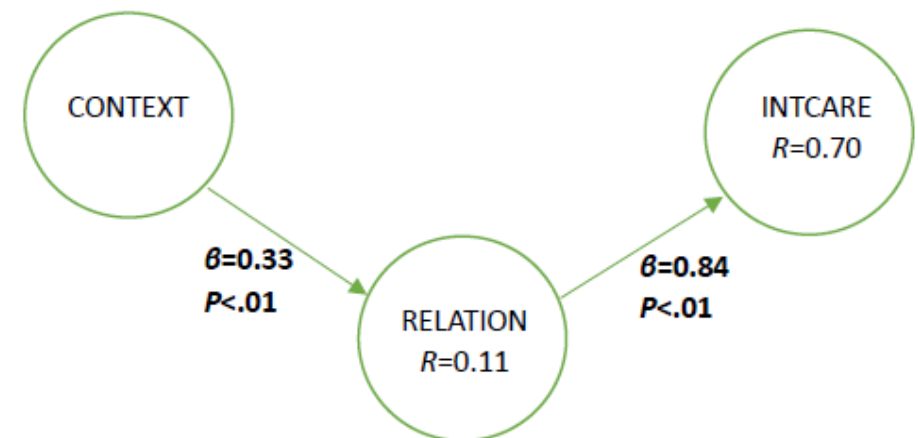
PILOT STUDY Methods (II)

- Dates: 1st to 30th of September 2022
- Population and sample:
 - ✓ Patients admitted to Internal Medicine
 - ✓ **42 subjects** signed the informed consent and were assessed
- Convenience sampling procedure
- Statistical analysis:
 - ✓ Univariate descriptive analysis (SPSS v29©)
 - ✓ Partial Least Squares regression model (SmartPLS 4©)

PILOT STUDY Results

- ❑ The tool designed for data collection did not pose comprehensibility problems, and its use may be feasible during the data collection phase.
- ❑ The average assessment time per subject was 20 minutes.
- ❑ The protocol designed for data collection was adequate and did not need to be modified.
- ❑ A predictive model of the FoC constructs that significantly relates the three dimensions was estimated.

SEX	Male	n = 24 (57.1%)	Total sample
	Female	n = 18 (42.9%)	
AGE	Mean	33.4	N = 42
	Standard deviation	10.7	



Future perspectives



SECTION 3

OPPORTUNITIES AND FUTURE PERSPECTIVES

Replicate the study in **Australia** – HUMANCARE project (**other European countries**); this would let us:

- ✓ Collect more samples to support the statistical significance of the results
- ✓ Study cultural differences
- ✓ **We have implemented the same Pilot Study in South Australia (2023)**

Obtain a list of validated criteria that define the FoC construct; this would let us:

- ✓ Evaluate hospitals and identify areas for improvement.
- ✓ Create a FoC quality label for the centres

Adapt the FoC Assessment Tool to different life-course phases; this would let us:

- ✓ Improving care and healthcare processes
- ✓ Identify specific needs across the life course (CLCT)
- ✓ Increasing clinical safety and quality of care



Dr. Regina Allande-Cussó

Senior Lecturer

College of Nursing

University of Seville (Seville – Spain)

MAIL: rallande@us.es



THANK YOU VERY MUCH