

JBI's Approach to Facilitating Knowledge Translation in Cardiovascular Care

AUTHORS

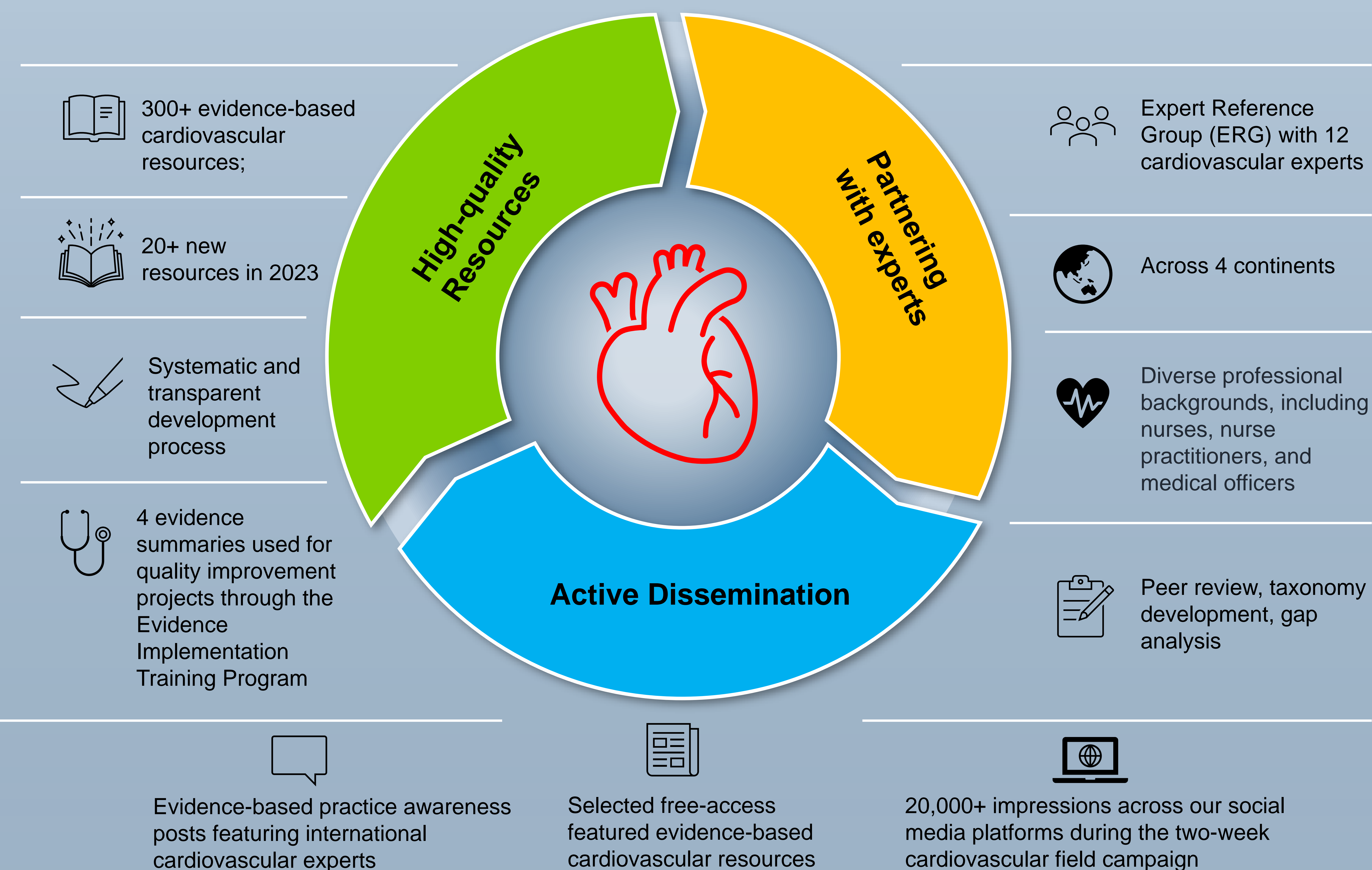
Pearson V¹, Wu C-J^{2,3}, Stolic S⁴, Brennan AL^{5,6}, McDonagh J^{7,8}, Pinero de Plaza M. A⁹, Hendriks J^{9,10,11}, Ryder M¹², Slyer J¹³, Cheng H^{14,15}, Dirksen A¹⁶, Healy K³, Porritt K¹

▶ BACKGROUND

In the rapidly evolving field of cardiovascular health, the incorporation of evidence-based practices remains a significant challenge. Despite the availability of robust clinical research and guidelines, a gap persists between the best available evidence and its application in real-world clinical settings. This often stems from barriers such as difficulty accessing quality evidence and a general lack of awareness. Point-of-care resources emerge as crucial tools in bridging this gap, offering clinicians access to synthesized, easy-to-understand, and up-to-date evidence. Such resources not only aid in informed decision-making but also improve patient outcomes by keeping care aligned with best practices tailored to the local context.

▶ JBI APPROACH

The JBI EBP Database is addressing this issue by collaborating with global experts to develop high-quality cardiovascular resources and promote awareness of evidence-based practices through active dissemination strategies.



▶ FINAL REFLECTIONS

The JBI EBP Database Cardiovascular Field resources are created following a rigorous methodology, converting complex evidence into user-friendly formats. Active dissemination strategies, including social media promotion and face-to-face

events, foster user engagement and knowledge translation. Our efforts contribute to the advancement of evidence-based cardiovascular care and the improvement of patient outcomes worldwide.

Pearson V¹, Wu C-J^{2,3}, Stolic S⁴, Brennan AL^{5,6}, McDonagh J^{7,8}, Pinero de Plaza M. A⁹, Hendriks J^{9,10,11}, Ryder M¹², Slyer J¹³, Cheng H^{14,15}, Dirksen A¹⁶, Healy K³, Porritt K¹

1. JBI, School of Public Health, Faculty of Health and Medical Sciences, University of Adelaide, Australia.
2. School of Nursing, Midwifery and Paramedicine, University of Sunshine Coast, Australia.
3. Royal Brisbane and Women's Hospital, Australia.
4. School of Nursing and Midwifery, Faculty of Science, Engineering and Health, University of Southern Queensland, Australia.
5. School of Public Health and Preventive Medicine, Monash University, Victoria, Australia.
6. Department of Cardiology, The Alfred Hospital, Australia.
7. The University of Wollongong, School of Nursing, Faculty of Science, Medicine, and Health, Australia.

8. The Centre for Chronic and Complex Care, Blacktown Hospital, NSW, Australia.
9. Caring Futures Institute, College of Nursing and Health Sciences, Flinders University, Australia.
10. Centre for Heart Rhythm Disorders, the University of Adelaide, Adelaide, Australia.
11. Department of Cardiology, Royal Adelaide Hospital, Australia.
12. School of Nursing, Midwifery & Health Systems, University College Dublin, Ireland.
13. College of Health Professions, Pace University, USA.
14. National Yang Ming Chiao Tung University, College of Medicine, Taiwan.
15. Taipei Veterans General Hospital, Taiwan.
16. Pflegeexperte APN, Cardiology, Darmstadt Hospital, Klinikum Darmstadt, Germany



Capture this QR code on your mobile phone to find out more